

Site Info:

General Notes

1. This site plan is based on multiple surveys and grade references provided by the office of Rudolph D. Snyder LS/PC.
2. Contractor shall field verify all grades and dimensions in advance.
3. See separate drawing for grading, drainage, and site utilities.
4. See separate drawings for Ground Disturbance and Site Permeability.

Feature Notes

- N1 Low condensing units screened by 36" high lattice.
- N2 Safety stripes painted on blacktop per applicable standards.
- N3 Universal accessibility graphic (NY) painted on blacktop per applicable standards.
- N4 Steel bollards, 6" dia. concrete filled, 4'-0" high, epoxy painted black.
- N5 Dumpster Enclosure 8'-0" wide x 7'-0" deep x 6'-0" high, 6x6 PT corner posts with 5/4 x 6 vertical boards gapped 1/4" and stained dark brown. One pair 42" doors of similar construction.
- N6 Retaining wall +/- 24" to 12" above grade, Dagostino Versa-Lok rock-faced with flat capstone.

Signage: Engineer grade aluminum on galvanized steel U-channel set into the ground, signs +/- 12" x 18" installed with bottom of sign 5'-0" above ground surface, graphics TBD.

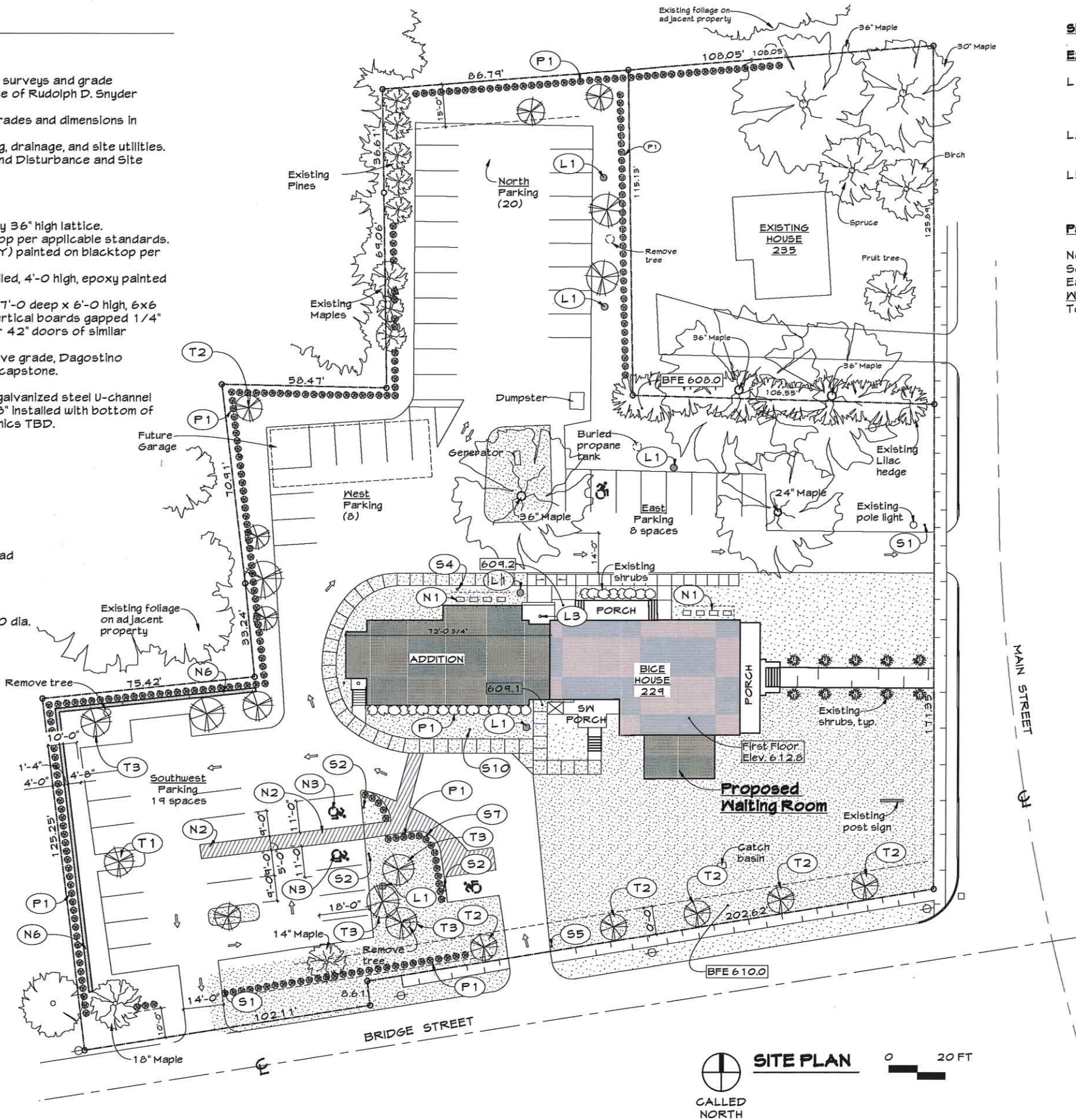
- S1 "Do Not Enter"
- S2 Universal accessibility graphic
- S3 "Right Turn Only"
- S4 "Left Turn Only"
- S5 "Entrance Only"
- S6 "Two-Way Traffic"
- S7 "No Standing"
- S8 "One-Way Traffic"
- S9 "Parking" w/ arrows to left & ahead
- S10 "Pick-up and Drop-off only"

Plantings

- P1 Arbor vitae: Min. 4'-0" high by 2'-0" dia. placed 48" on center.
- P2 White Hydrangea: ±32" w. x ±32" h. (mature) placed 32" on center.

New Trees: Existing are as noted.

- T1 Japanese maple, 3" dia
- T2 Red maple, 4" dia.
- T3 Pagoda dogwood, 3" dia.



Site Info (cont.):

Exterior Lights

- L1 SNOG "Jamestown" Post Mount cast aluminum black +/- 16" x 30" with glass panels, 1500 lumen, 3000K LED on matching aluminum post 7'-0" above grade.
- L2 SNOG "Jamestown" Wall Mount Uplight cast aluminum black +/- 24" high with glass panels, 750 lumens, 3000K LED.
- L3 SNOG "Jamestown" Ceiling Mtd. cast aluminum black +/- 24" high with glass panels, 750 lumens, 3000K LED.

Parking Capacity

North Parking:	20
Southwest Parking:	18
East Parking :	8
West Parking:	8
Total	54

Basics on these drawings refer to the full size 22" x 34" drawing sheet. For 11" x 17" reductions, reduce written scales by 50%. THIS DRAWING IS THE PROPERTY OF THE ARCHITECT. IT IS TO BE USED ONLY WITH RESPECT TO THE PROJECT IT IS A VIOLATION OF LAW FOR ANYONE, INCLUDING UNDER THE DIRECT OR INDIRECT SUPERVISION OF THE ARCHITECT, TO ALTER THIS DOCUMENT IN ANY WAY. IF ALTERED, THE ARCHITECT PROFESSIONAL SHALL AFFIX THEIR SIGNATURE, THE DATE OF ALTERATION AND A DESCRIPTION OF THE ALTERATION. © CRAWFORD & STEARNS

**229 MAIN STREET
 SCHOHARIE, NEW YORK**

DRAWING LOG
DRAWING TITLE
SITE PLAN
PROJECT #
DRAWING NO.
S200
DATE