

Village of Schoharie

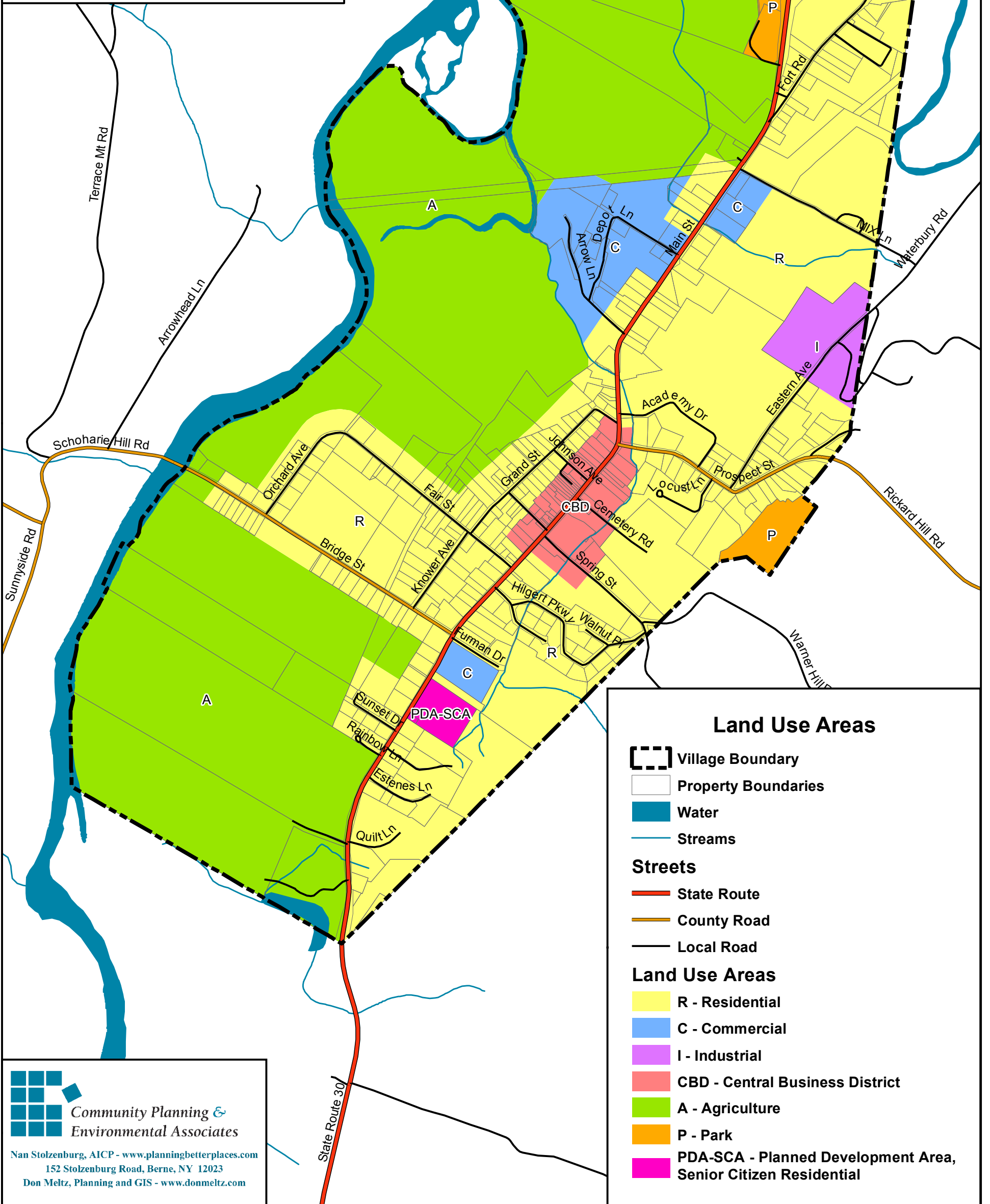
Schoharie County, NY



Adopted - January 2013

This zoning map updates and replaces previous versions of the Village of Schoharie Land Use District Map

0 500 1,000 2,000 Feet



Land Use Areas

- Village Boundary
- Property Boundaries
- Water
- Streams
- Streets**
- State Route
- County Road
- Local Road
- Land Use Areas**
- R - Residential
- C - Commercial
- I - Industrial
- CBD - Central Business District
- A - Agriculture
- P - Park
- PDA-SCA - Planned Development Area, Senior Citizen Residential



Community Planning & Environmental Associates

Nan Stolzenburg, AICP - www.planningbetterplaces.com
 152 Stolzenburg Road, Berne, NY 12023
 Don Meltz, Planning and GIS - www.donmeltz.com